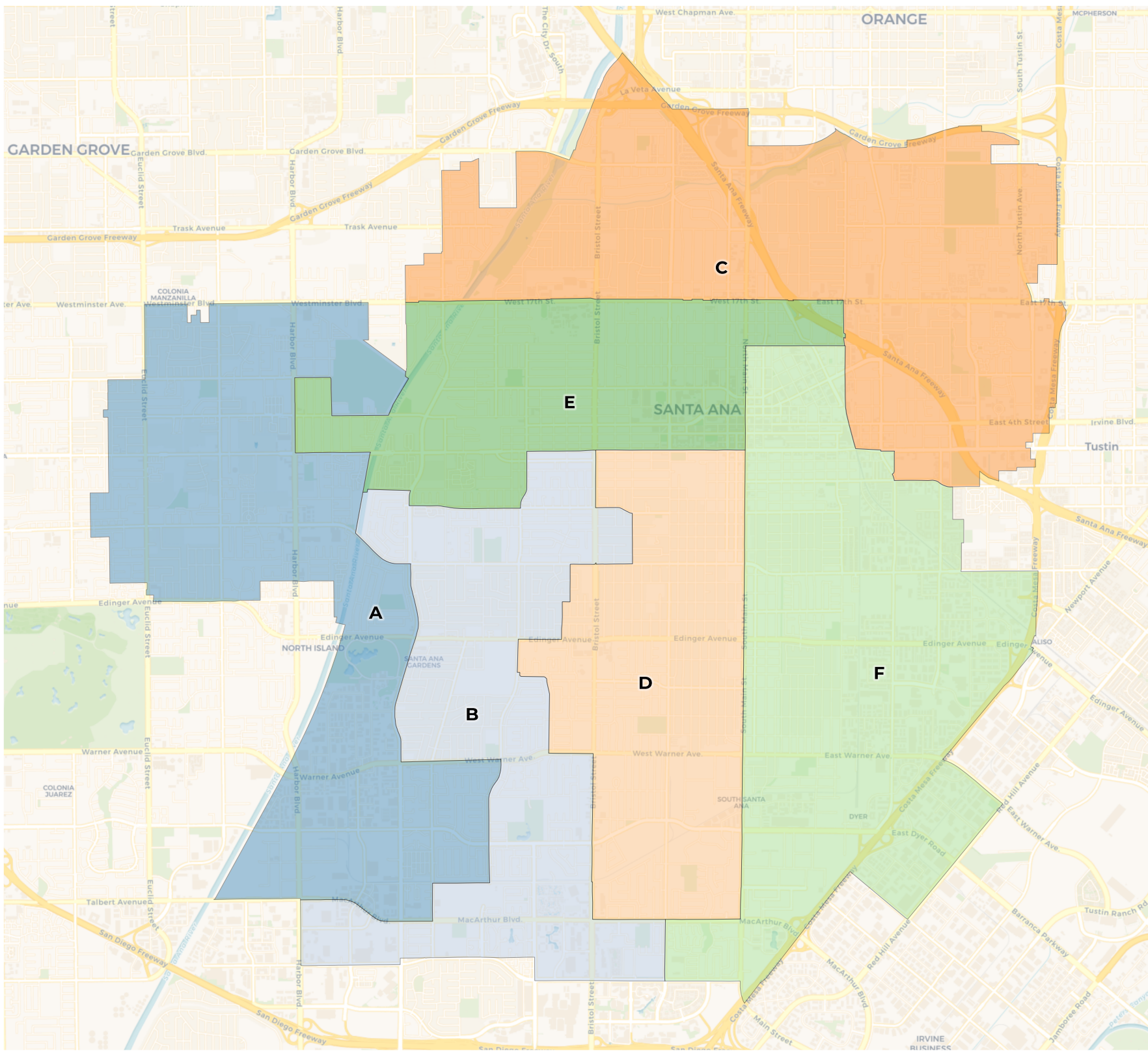




# REDISTRICTING PARTNERS

## City of Santa Ana Draft Plan A



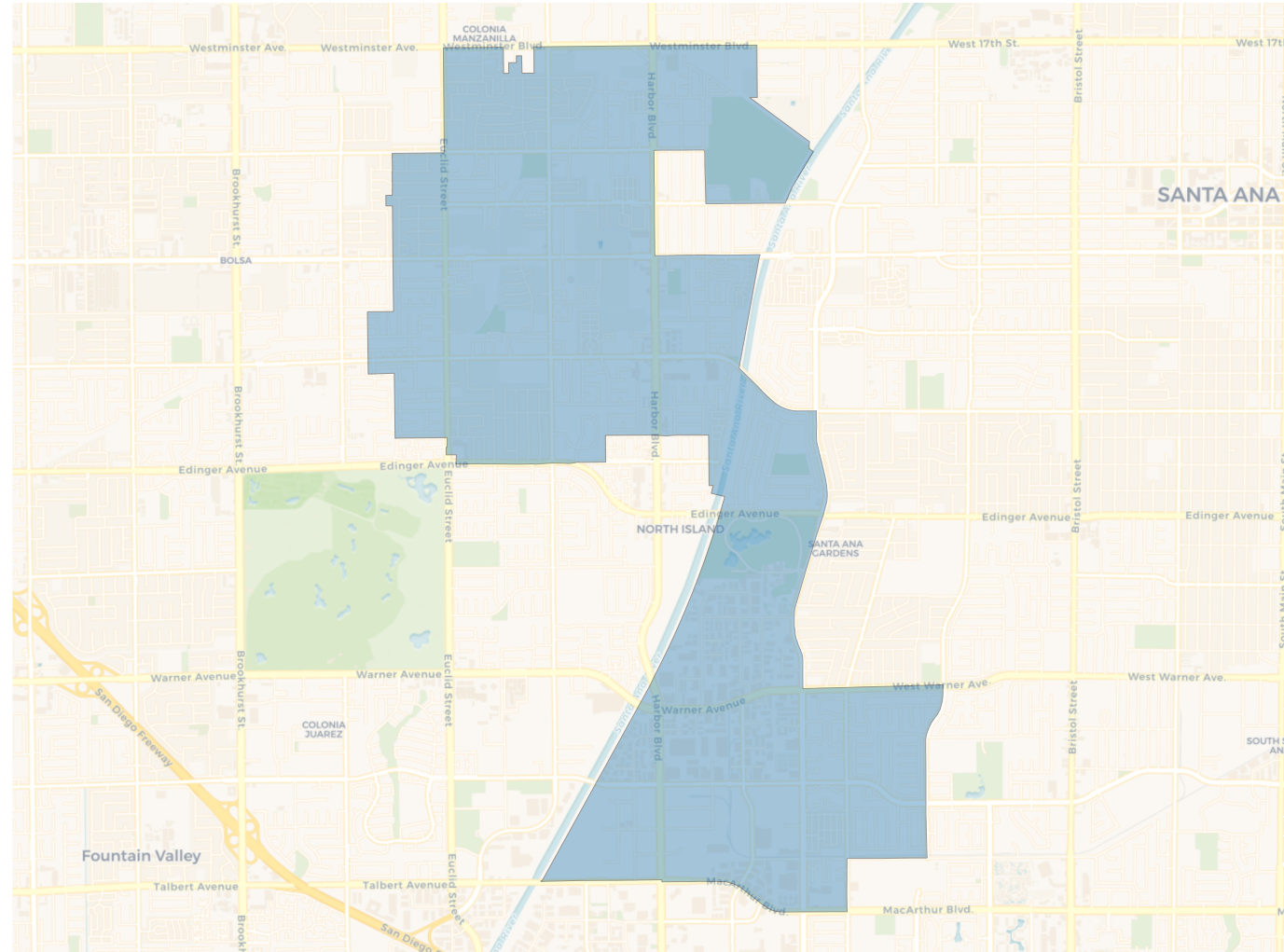
### 2020 Census

	A	B	C	D	E	F
Population	51,970	54,838	50,807	50,459	52,413	50,906
Deviation	71	2,939	-1,092	-1,440	514	-993
Deviation %	0.1%	5.7%	-2.1%	-2.8%	1.0%	-1.9%
Other	4,350	5,461	11,900	3,517	3,651	3,327
Other %	8.4%	10.0%	23.4%	7.0%	7.0%	6.5%
Latino	28,418	43,009	33,568	43,961	45,053	44,903
Latino %	54.7%	78.4%	66.1%	87.1%	86.0%	88.2%
Asian	18,808	5,714	4,692	2,728	3,154	2,361
Asian %	36.2%	10.4%	9.2%	5.4%	6.0%	4.6%
Black	394	654	647	253	555	315
Black %	0.8%	1.2%	1.3%	0.5%	1.1%	0.6%

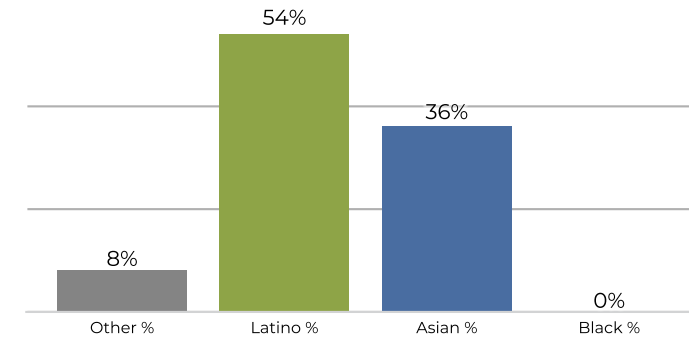
### Citizen Voting Age Population (CVAP)

	A	B	C	D	E	F
Total CVAP	31,024	26,862	29,330	26,238	20,470	20,288
Other CVAP	4,333	5,289	11,194	3,974	2,999	2,728
Other CVAP %	14.0%	19.7%	38.2%	15.1%	14.7%	13.4%
Latino CVAP	13,278	17,060	14,177	19,755	14,976	15,575
Latino CVAP %	42.8%	63.5%	48.3%	75.3%	73.2%	76.8%
Asian CVAP	13,167	3,954	3,237	2,061	2,247	1,826
Asian CVAP %	42.4%	14.7%	11.0%	7.9%	11.0%	9.0%
Black CVAP	246	559	722	449	248	159
Black CVAP %	0.8%	2.1%	2.5%	1.7%	1.2%	0.8%

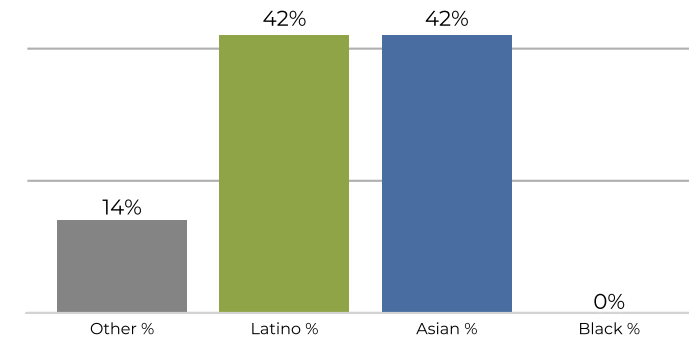
## District A



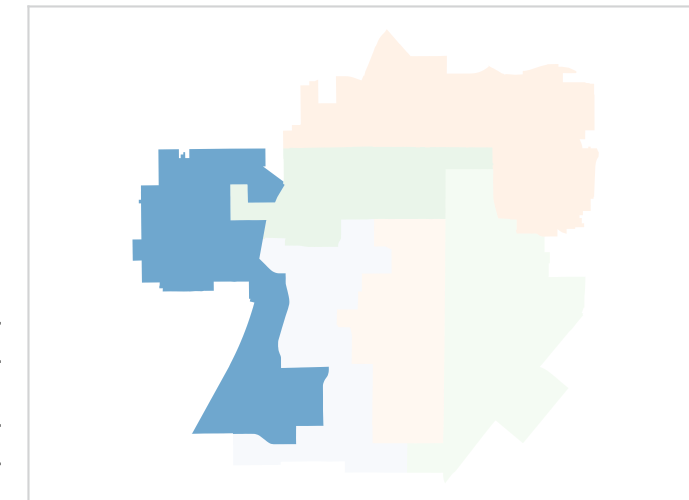
## 2020 Census



## Citizen Voting Age Population

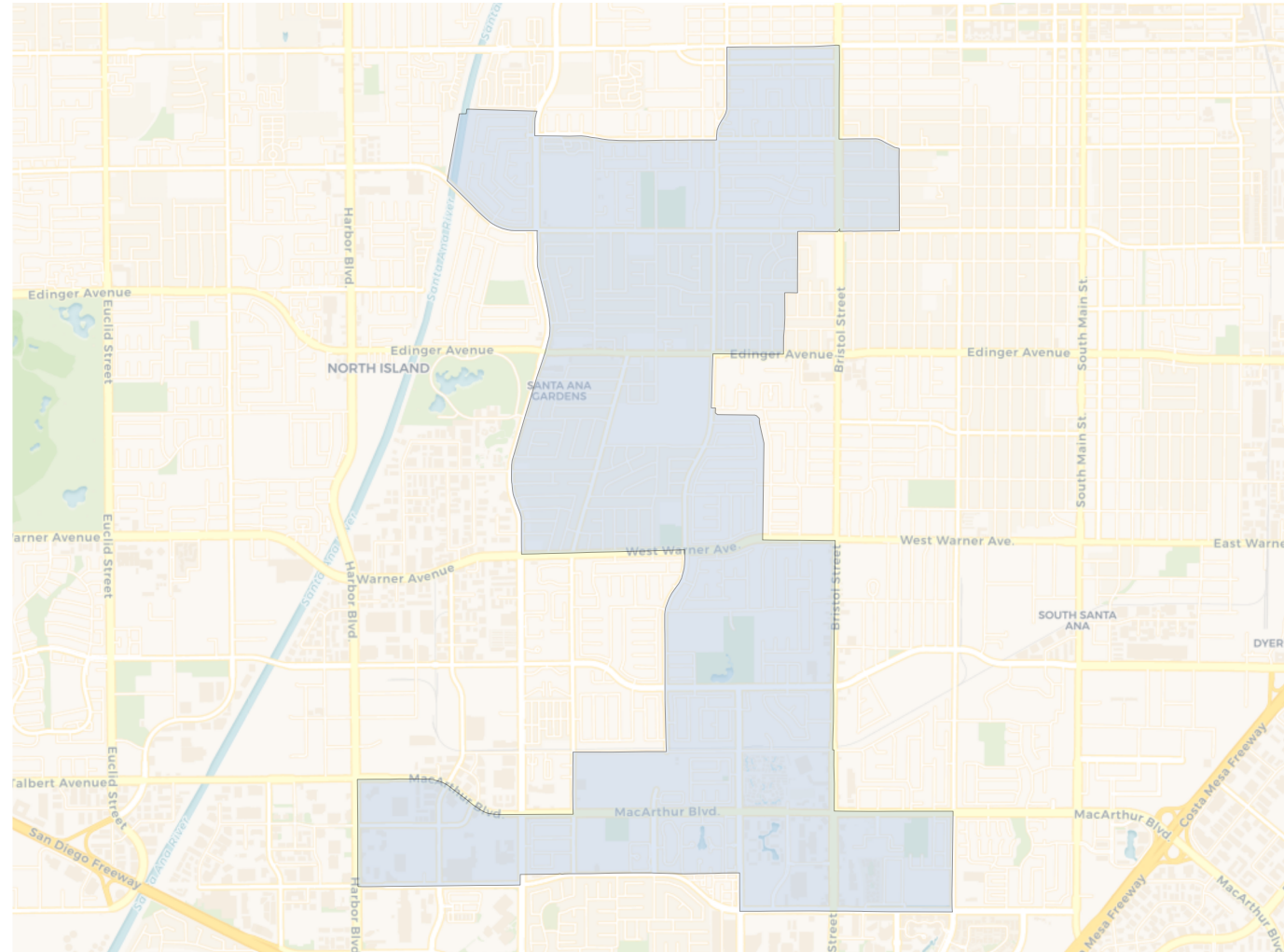


Population	Deviation	Deviation %	Other	Other %	Latino	Latino %	Asian	Asian %	Black	Black %
51,970	71	0.1%	4,350	8.4%	28,418	54.7%	18,808	36.2%	394	0.8%
Total CVAP	Other CVAP	Other CVAP %	Latino CVAP	Latino CVAP %	Asian CVAP	Asian CVAP %	Black CVAP	Black CVAP %		
31,024	4,333	14.0%	13,278	42.8%	13,167	42.4%	246	0.8%		

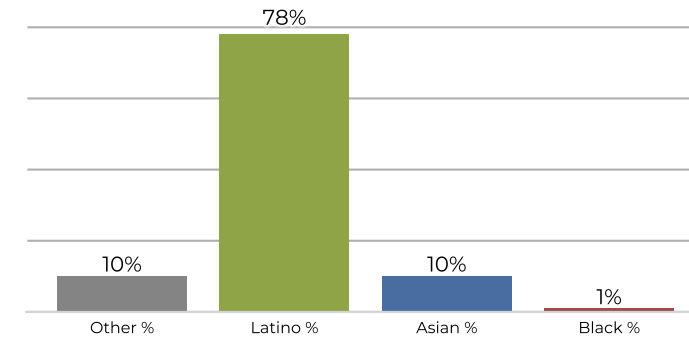




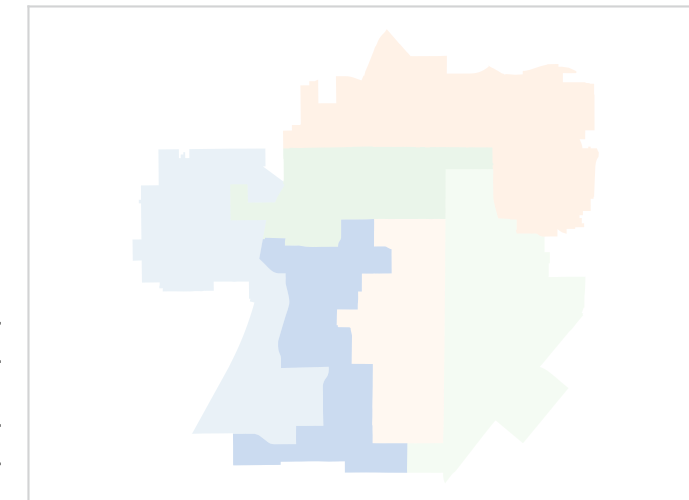
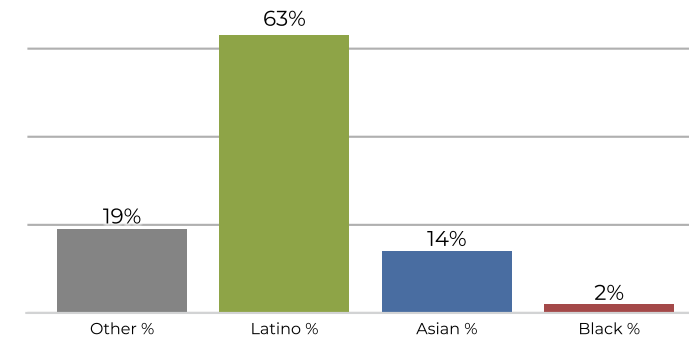
### District B



### 2020 Census



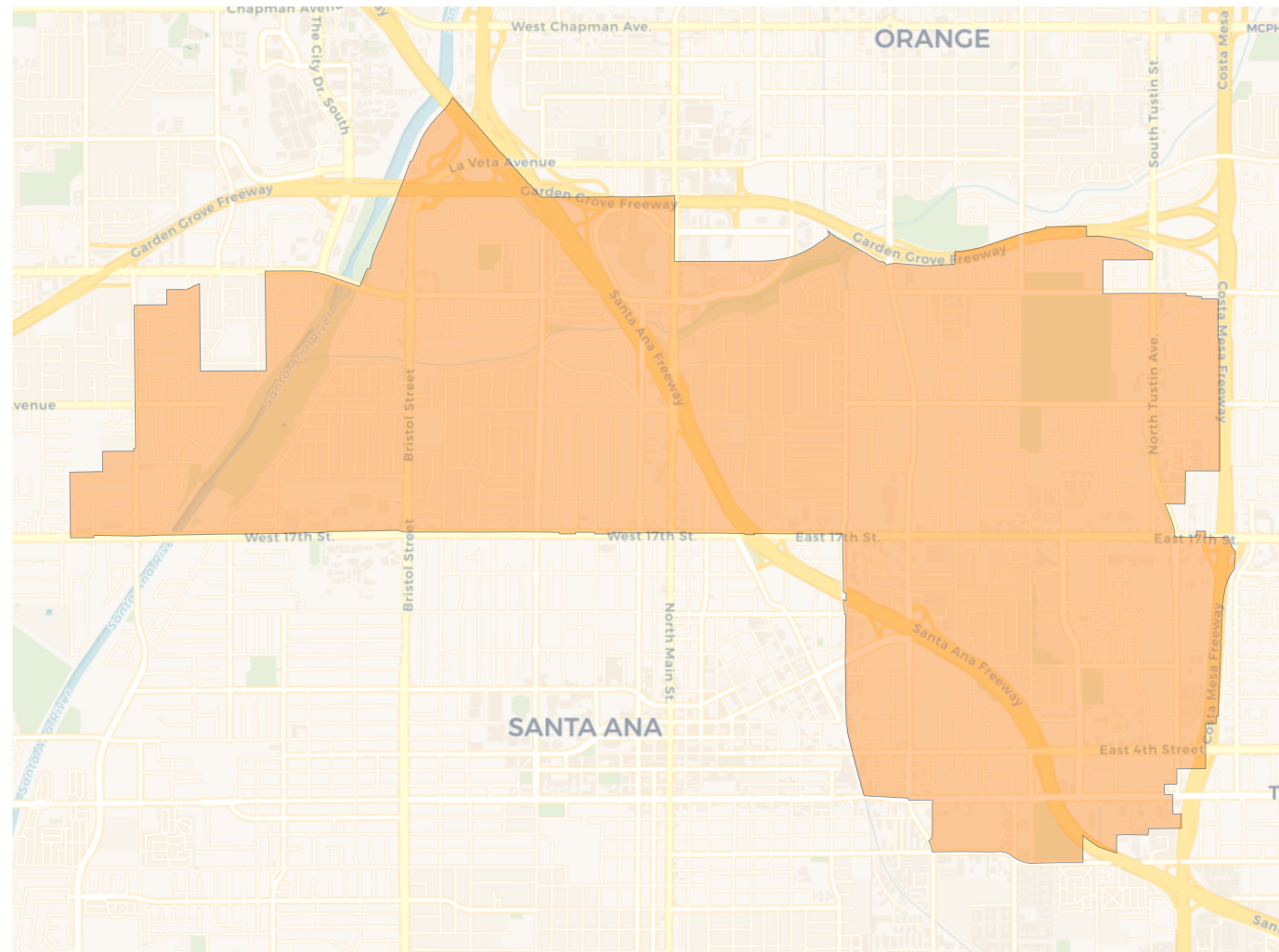
### Citizen Voting Age Population



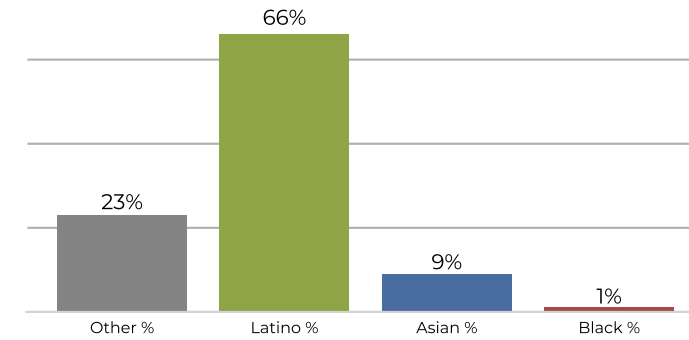
Population	Deviation	Deviation %	Other	Other %	Latino	Latino %	Asian	Asian %	Black	Black %
54,838	2,939	5.7%	5,461	10.0%	43,009	78.4%	5,714	10.4%	654	1.2%
Total CVAP	Other CVAP	Other CVAP %	Latino CVAP	Latino CVAP %	Asian CVAP	Asian CVAP %	Black CVAP	Black CVAP %		
26,862	5,289	19.7%	17,060	63.5%	3,954	14.7%	559	2.1%		



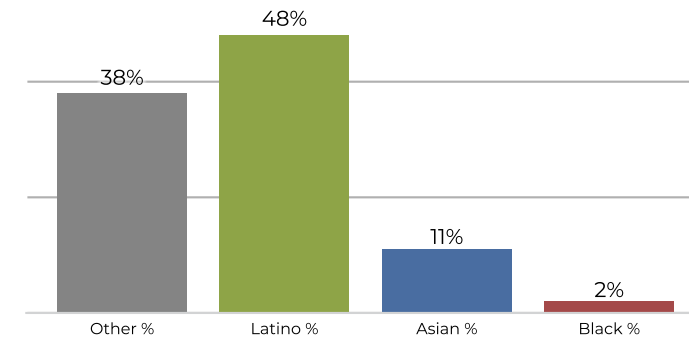
## District C



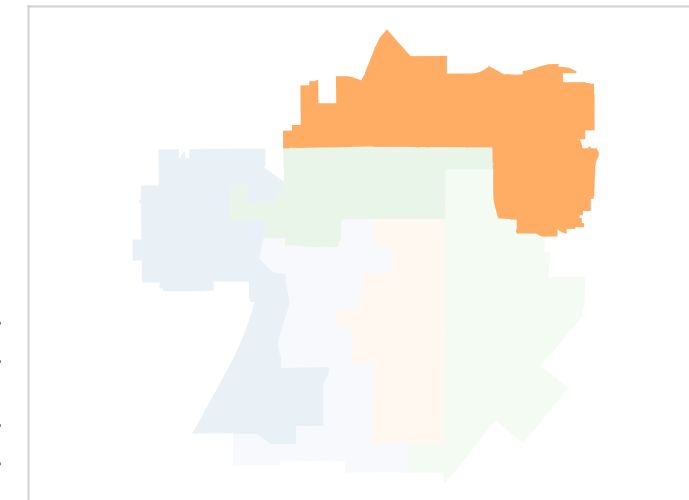
## 2020 Census



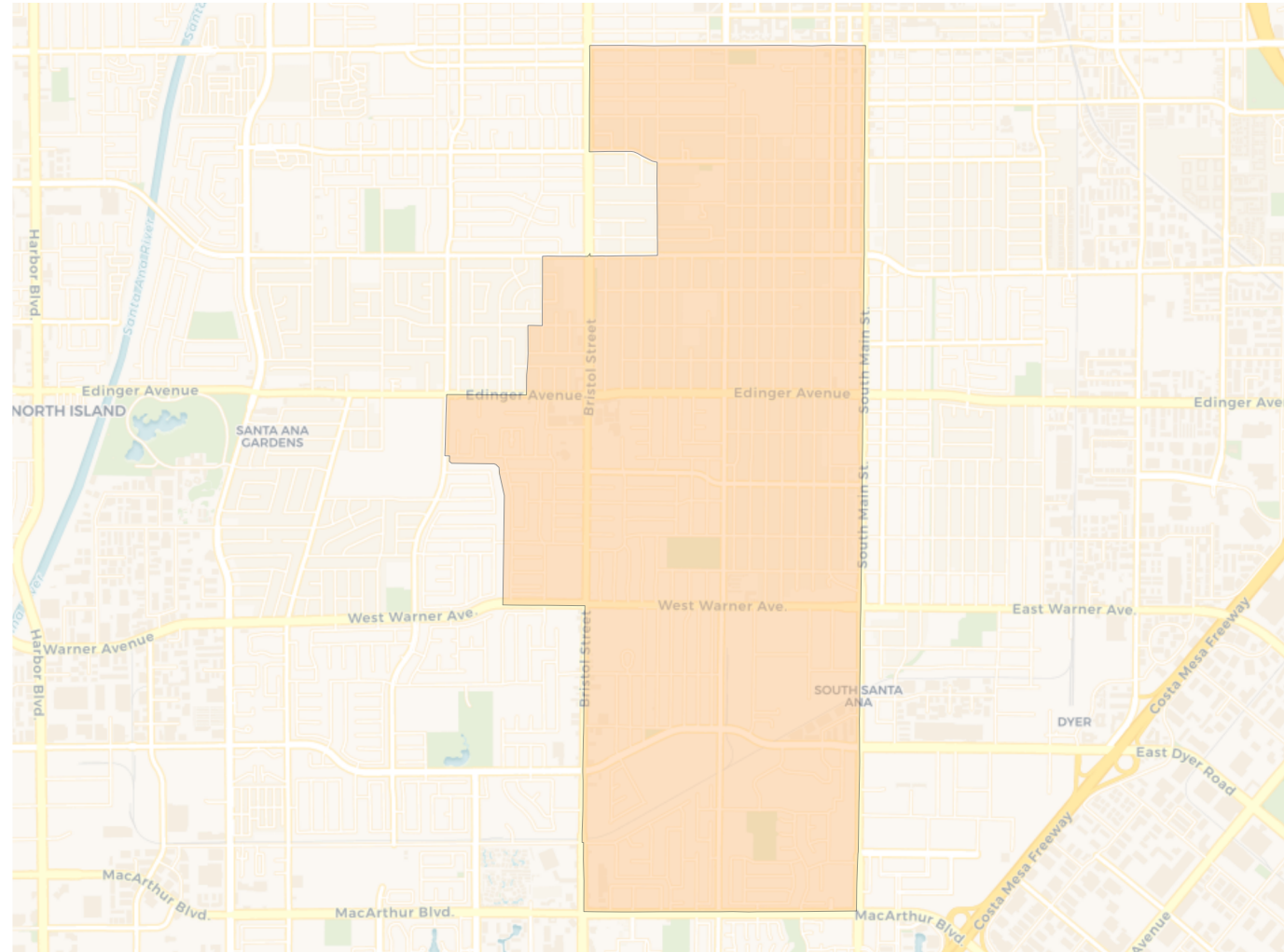
## Citizen Voting Age Population



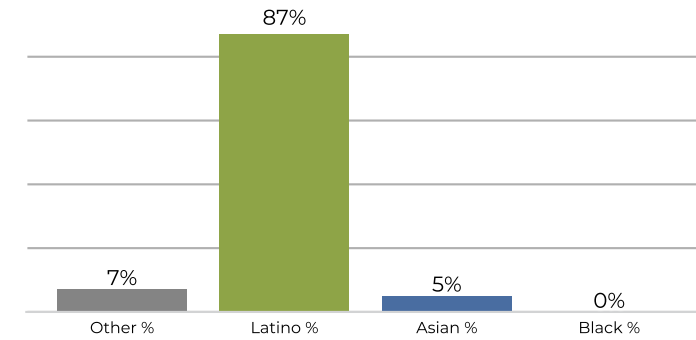
Population	Deviation	Deviation %	Other	Other %	Latino	Latino %	Asian	Asian %	Black	Black %
50,807	-1,092	-2.1%	11,900	23.4%	33,568	66.1%	4,692	9.2%	647	1.3%
Total CVAP	Other CVAP	Other CVAP %	Latino CVAP	Latino CVAP %	Asian CVAP	Asian CVAP %	Black CVAP	Black CVAP %		
29,330	11,194	38.2%	14,177	48.3%	3,237	11.0%	722	2.5%		



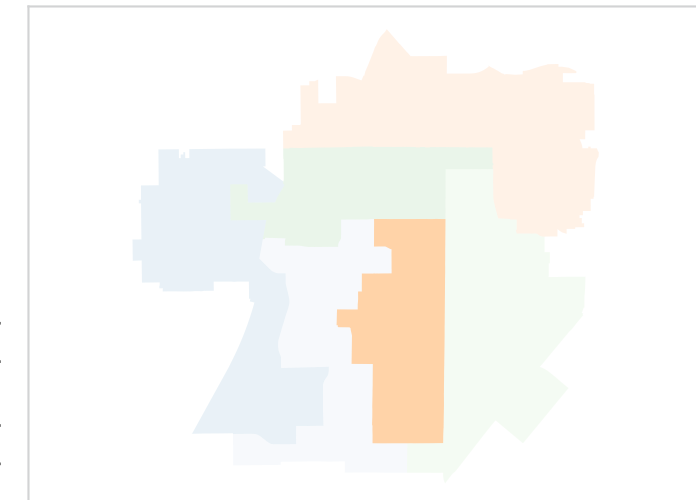
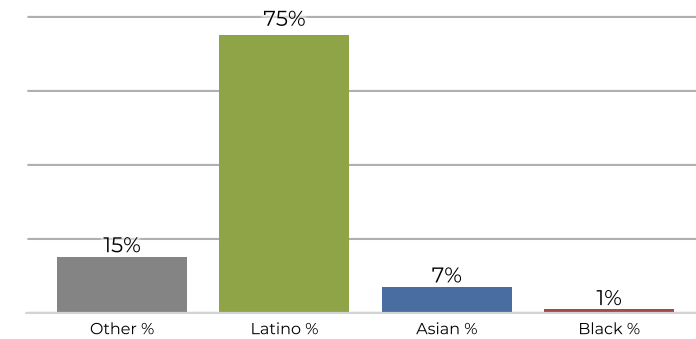
### District D



### 2020 Census



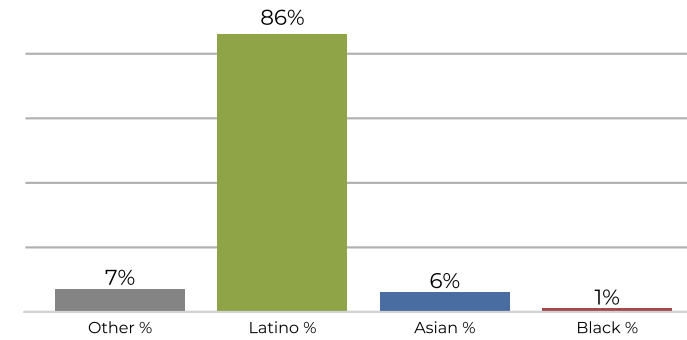
### Citizen Voting Age Population



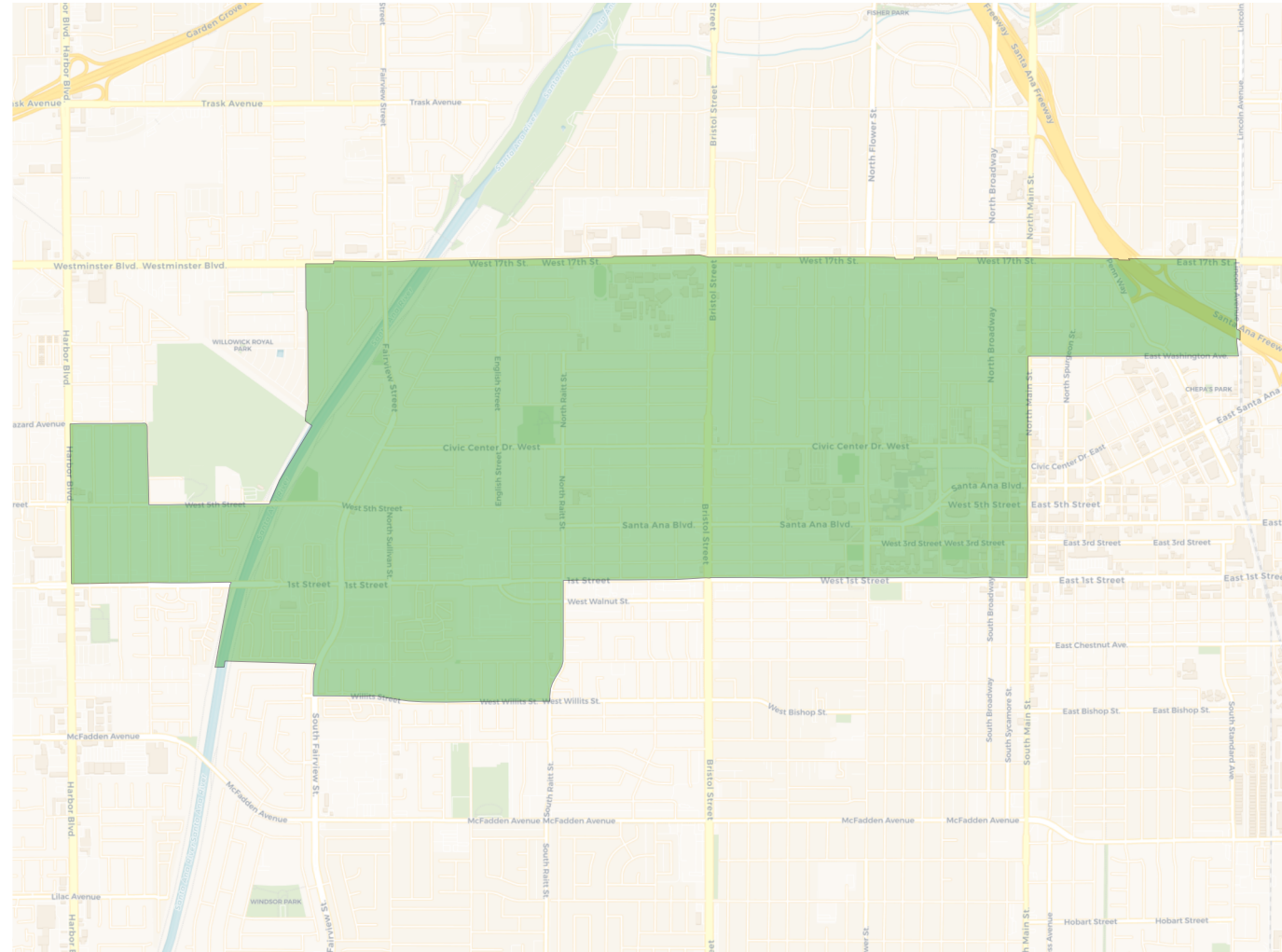
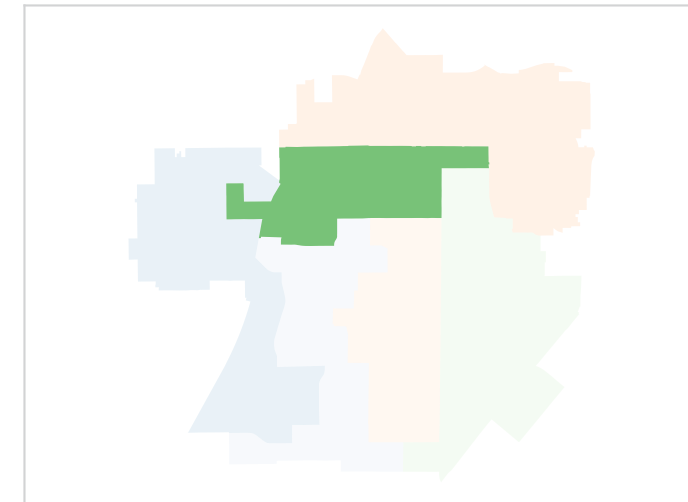
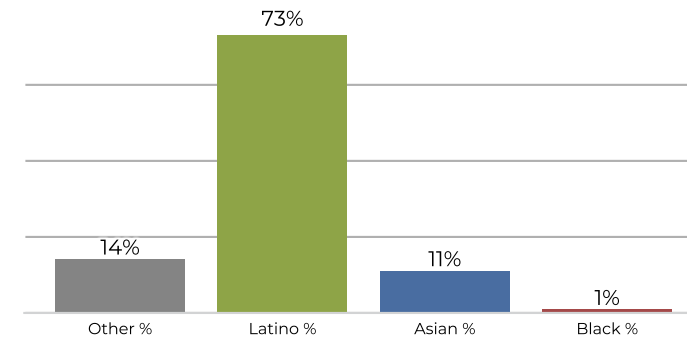
Population	Deviation	Deviation %	Other	Other %	Latino	Latino %	Asian	Asian %	Black	Black %
50,459	-1,440	-2.8%	3,517	7.0%	43,961	87.1%	2,728	5.4%	253	0.5%
Total CVAP	Other CVAP	Other CVAP %	Latino CVAP	Latino CVAP %	Asian CVAP	Asian CVAP %	Black CVAP	Black CVAP %		
26,238	3,974	15.1%	19,755	75.3%	2,061	7.9%	449	1.7%		

## District E

## 2020 Census



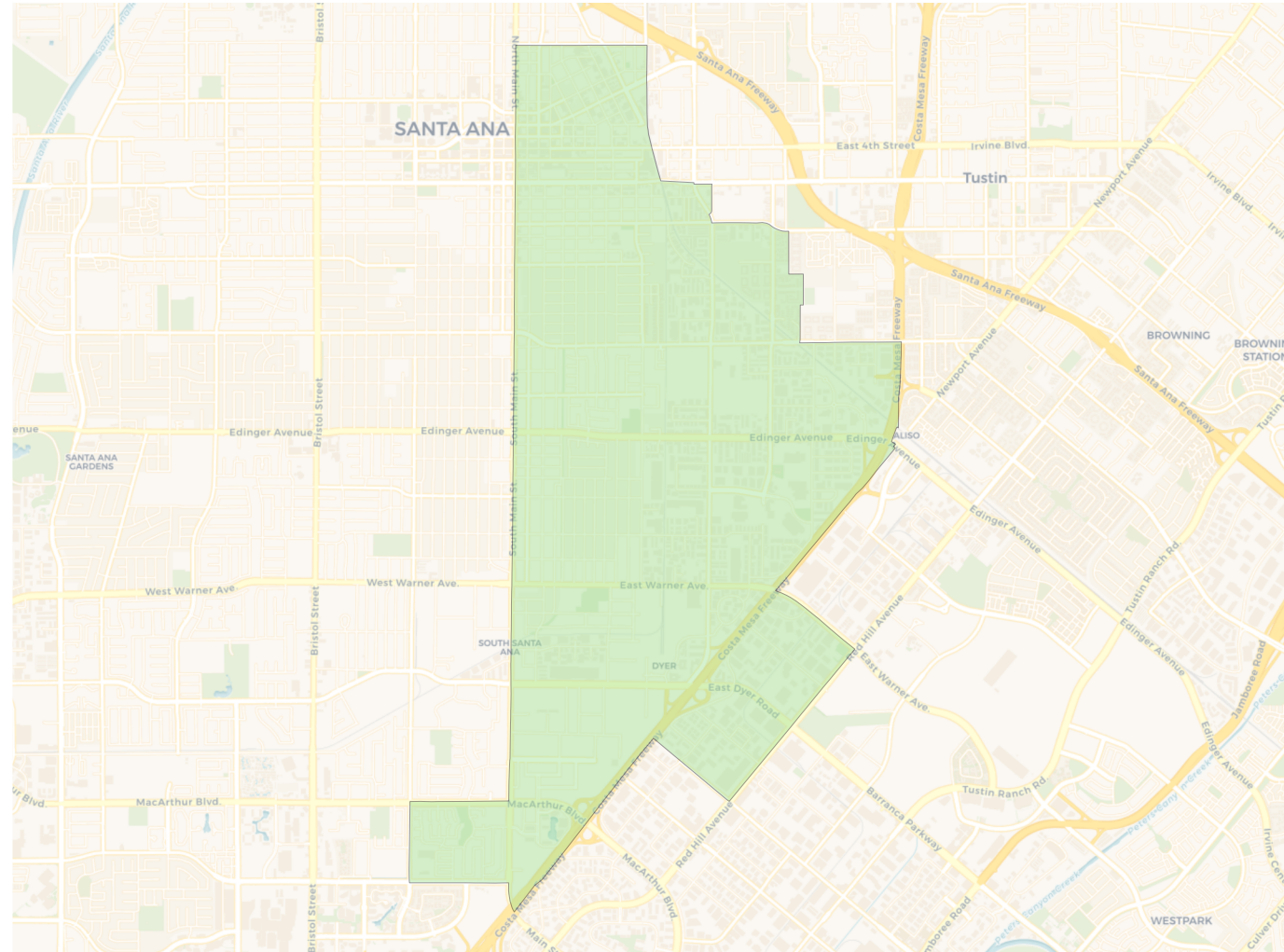
## Citizen Voting Age Population



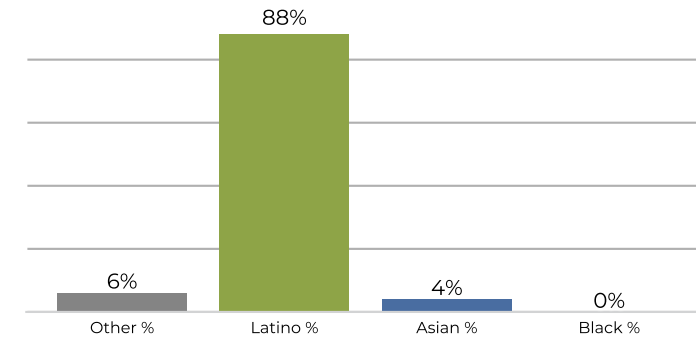
Population	Deviation	Deviation %	Other	Other %	Latino	Latino %	Asian	Asian %	Black	Black %
52,413	514	1.0%	3,651	7.0%	45,053	86.0%	3,154	6.0%	555	1.1%
Total CVAP	Other CVAP	Other CVAP %	Latino CVAP	Latino CVAP %	Asian CVAP	Asian CVAP %	Black CVAP	Black CVAP %		
20,470	2,999	14.7%	14,976	73.2%	2,247	11.0%	248	1.2%		



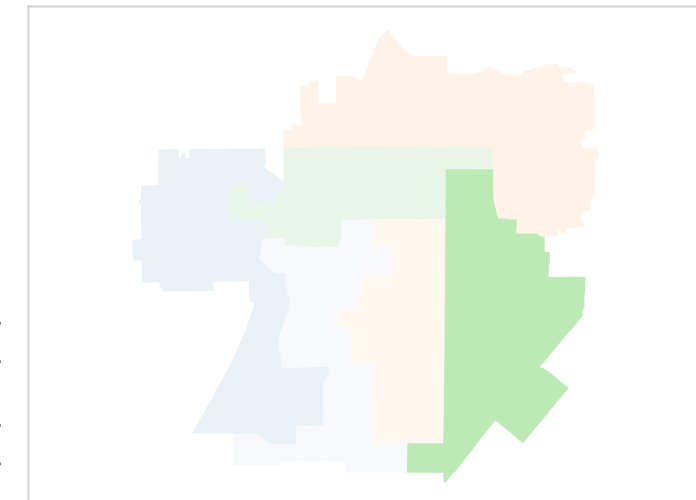
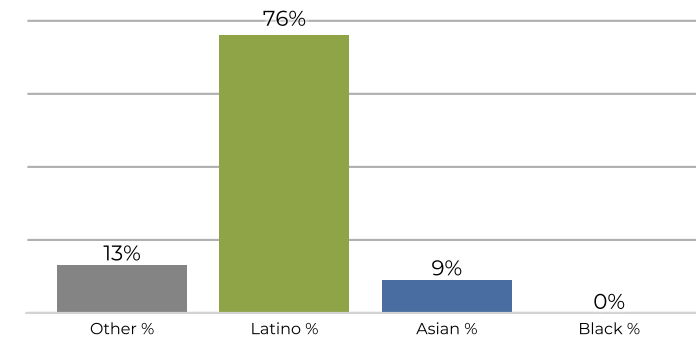
### District F



### 2020 Census



### Citizen Voting Age Population



Population	Deviation	Deviation %	Other	Other %	Latino	Latino %	Asian	Asian %	Black	Black %
50,906	-993	-1.9%	3,327	6.5%	44,903	88.2%	2,361	4.6%	315	0.6%
Total CVAP	Other CVAP	Other CVAP %	Latino CVAP	Latino CVAP %	Asian CVAP	Asian CVAP %	Black CVAP	Black CVAP %		
20,288	2,728	13.4%	15,575	76.8%	1,826	9.0%	159	0.8%		